

## **Quick Start**

### ***Installation***

### ***Running the program***

### ***Quick Procedures***

***Import Songs, Styles and Music Assistant\****

***Export Songs, Styles and Music Assistant\****

***Converting User Program Set into Music Assistant \****

***Converting Music Assistant\* into User Program Set***

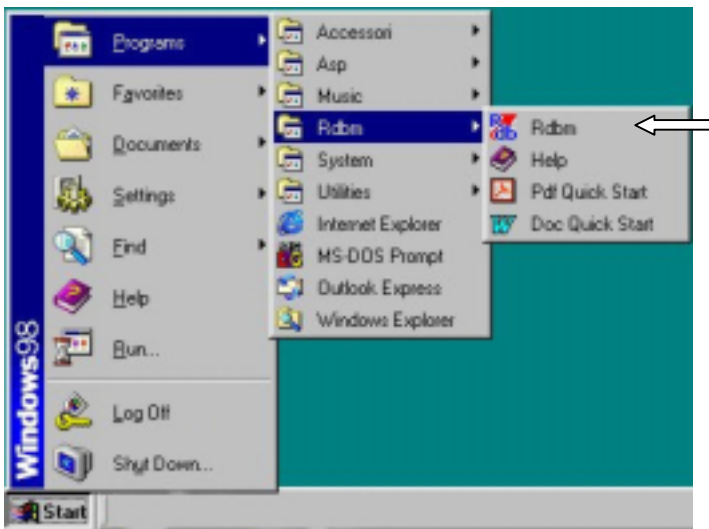
***Creating your own Customized Zip Disk***

## **Installation**

Double click on RDBM\_Install.exe, the installation will start and you will be guided through the installation windows till the end of the procedure.

## **Running the program**

Press the START button and select Programs-RDBM.




## **Quick Procedures**

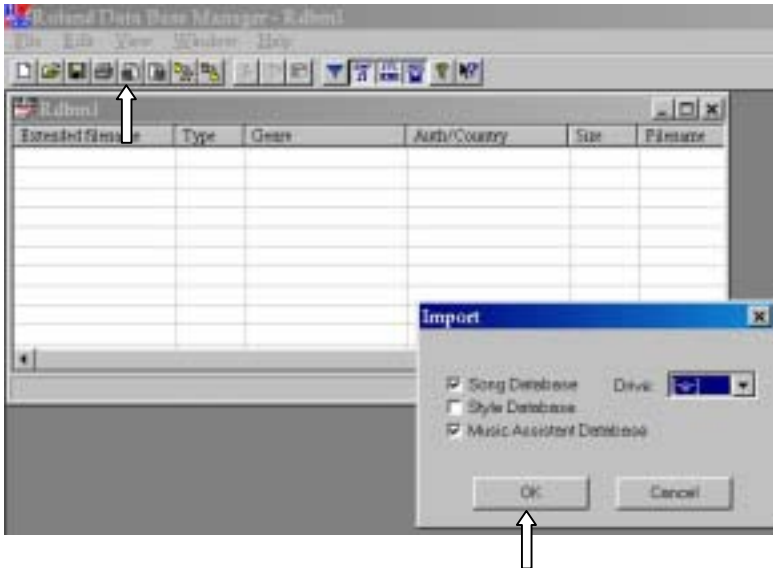
In this section you will find the 5 most important procedures :

- Import Songs, Styles and Music Assistant\*
- Export Songs, Styles and Music Assistant\*
- Converting User Program Set into Music Assistant \*
- Converting Music Assistant\* into User Program Set
- Creating your own Customized Zip Disk

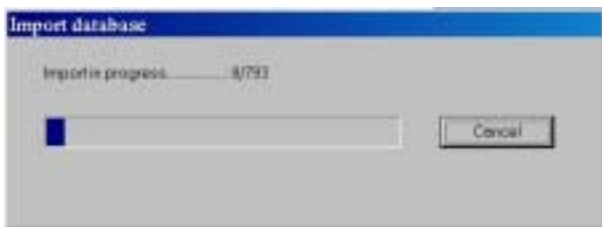
### Import Songs, Styles and Music Assistant\*

With this function you can read data from Zip (Songs, Styles and Music Assistant) and import them in your computer.

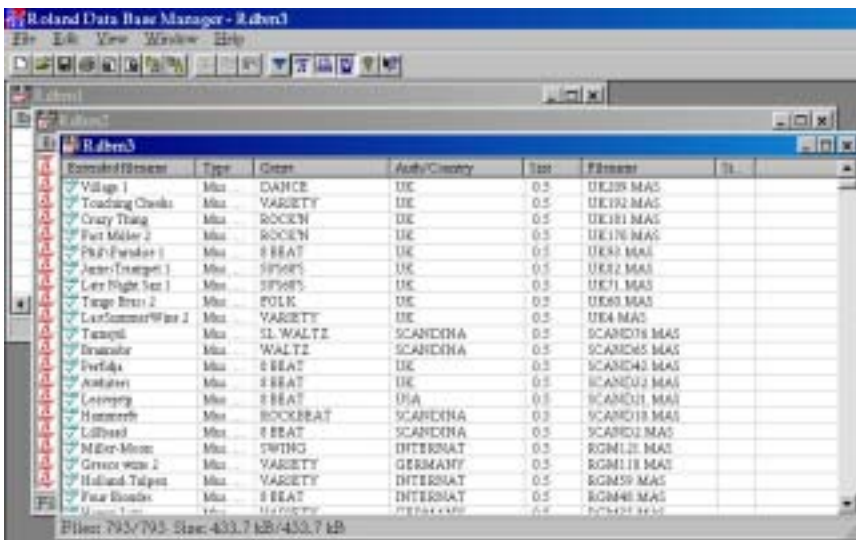
Select Import in the menu File (or press this icon : ). In the DialogBox that appears you can choose the database to import (Song and/or Style and/or Music Assistant) and the Zip drive of your PC.



Press the OK button and the import procedure will start. A window will show you the import working status.




When finished a window will appear like this.

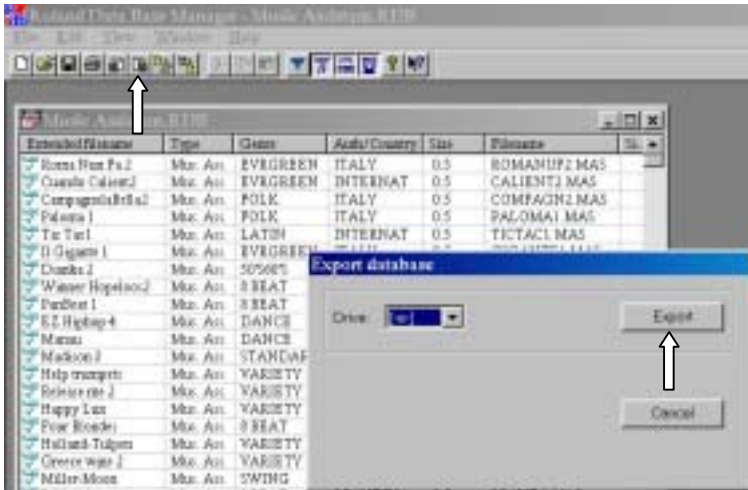


Now you can edit your Database by changing Extended Filename, Genre, Author/Country, Filename. For Rename and other similar edit operations see the on-line Help in the program.

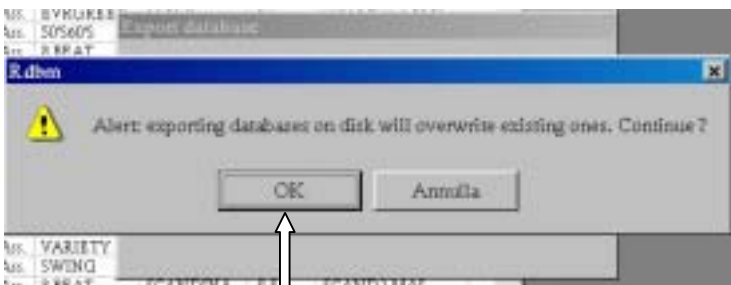
\* - Music Assistant is available only in the VA series

## Export Songs, Styles and Music Assistant\*

With this function you can export the database currently loaded in the RDBM program into the ZIP. Select Export in the menu File (or press this icon : ). In the DialogBox that appears you can choose the Zip drive of your PC.



Press the Export button. A DialogBox informs you that the existing database in the Zip will be overwritten. (For example : If you are exporting Songs database and the Zip contains Songs, Styles and Music Assistant databases, the result will be a zip with the new song database and the old Style and Music Assistant database)



Press the Export button and the procedure will start. A window will show you the export working status.




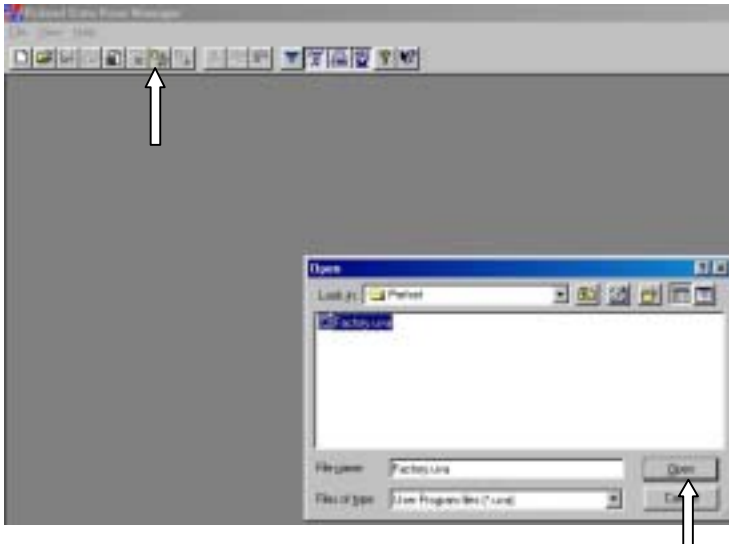
When finished a window will appear like this.



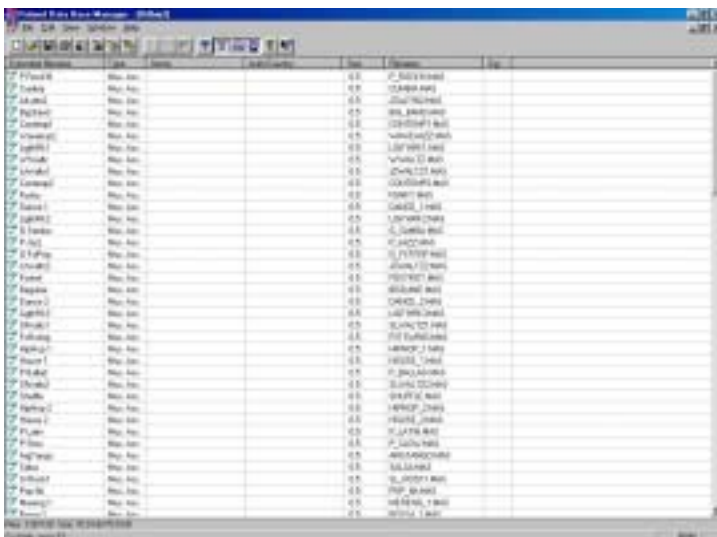
Press the OK button to leave this window.

## Converting User Program Set into Music Assistant \*

With this function you can convert your User Program Set into a Music Assistant database. Select “Load User Program Set” in the menu File (or press this icon : ). In the window that appears select the path in which the User Program Set to be converted is contained and press the Open button.




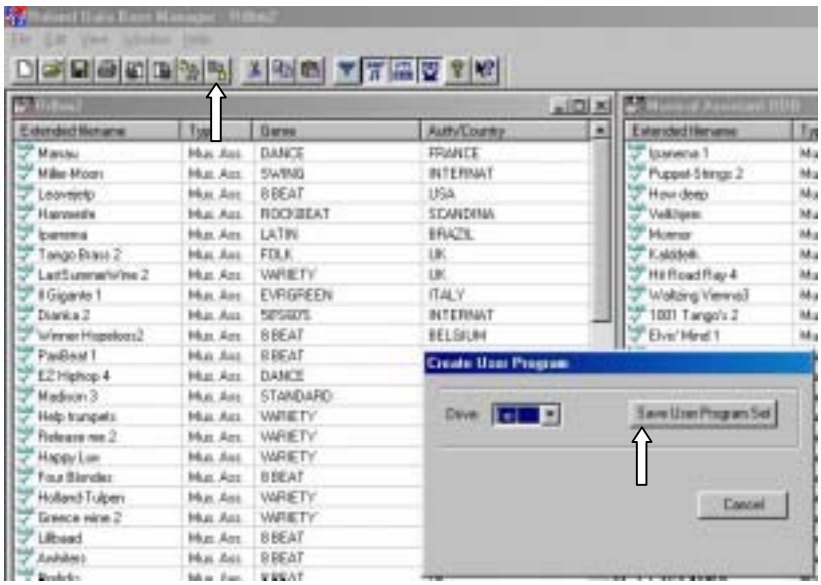
After the load, the program will appear like this. Your User Program Set is already a Music Assistant database.



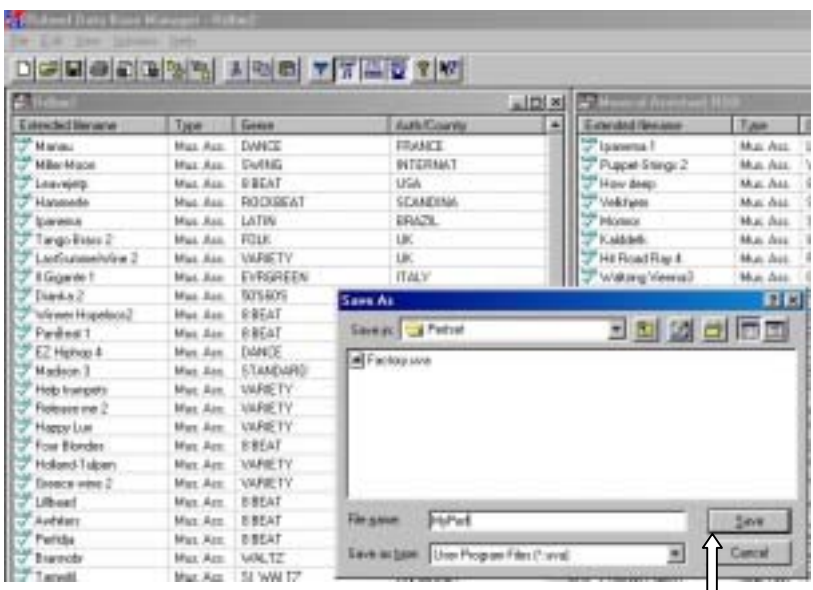
Now you can edit and then save it into your PC or into a Zip Disk.



- When you have created the new Database with up to 128 Music Assistant\*, select “Create User Program Set” in the menu File (or press this icon: ).



- In the window that appears select the path and the name for the new User Program Set and press the Save button. (Please don't use more than 8 characters per file name).



- When you receive the following message, the operation is successfully completed.



\* - Music Assistant is available only in the VA series

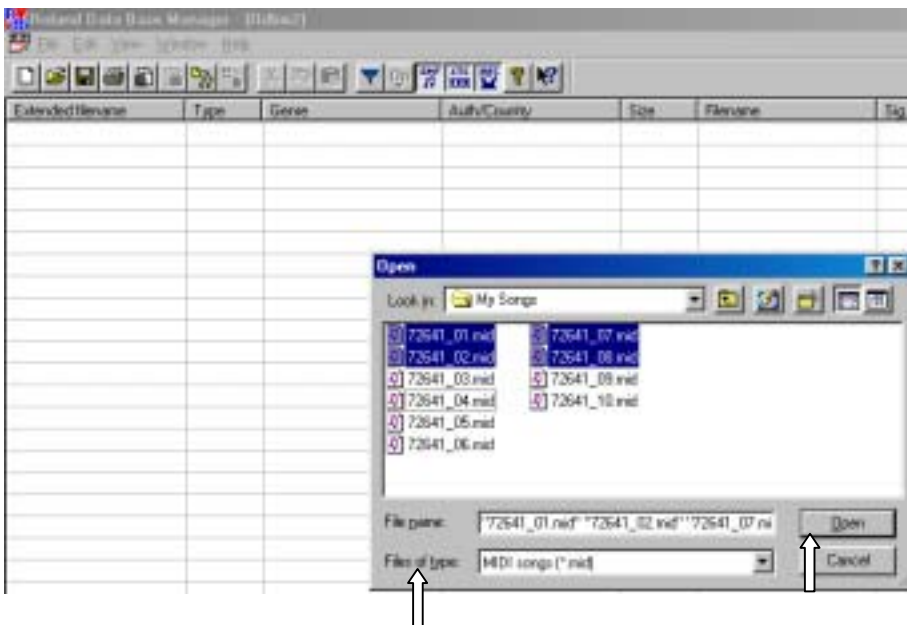
## Creating your own Customized Zip Disk

...and if I wish to create a completely new Zip Disk ?  
 Don't worry with RDBM it's very easy.  
 Please follow these simple steps :

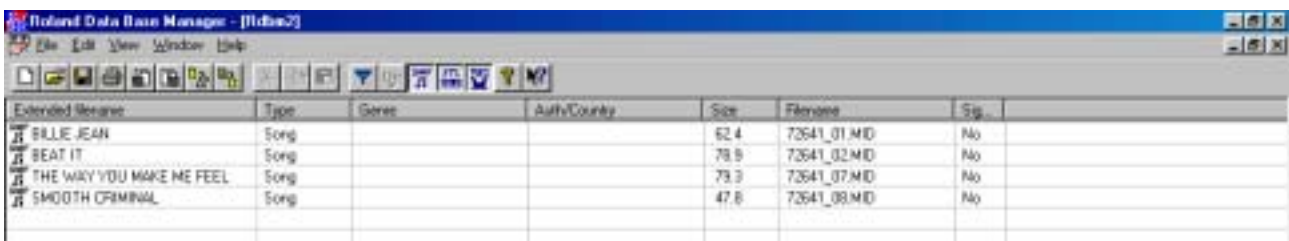
1. Create a new empty database by selecting New in the menu File (or press this icon : ).

### Adding Songs:

2. Select Add in the menu File. In the window that comes out, choose the path in which your own Midi Files are contained (please remember to select file type : Midi Songs \*.mid).  
*Note: You can't add Songs with file names longer than 8 characters. Please rename them first.*
3. In your Midi files folder select one or more files and press the Open button.

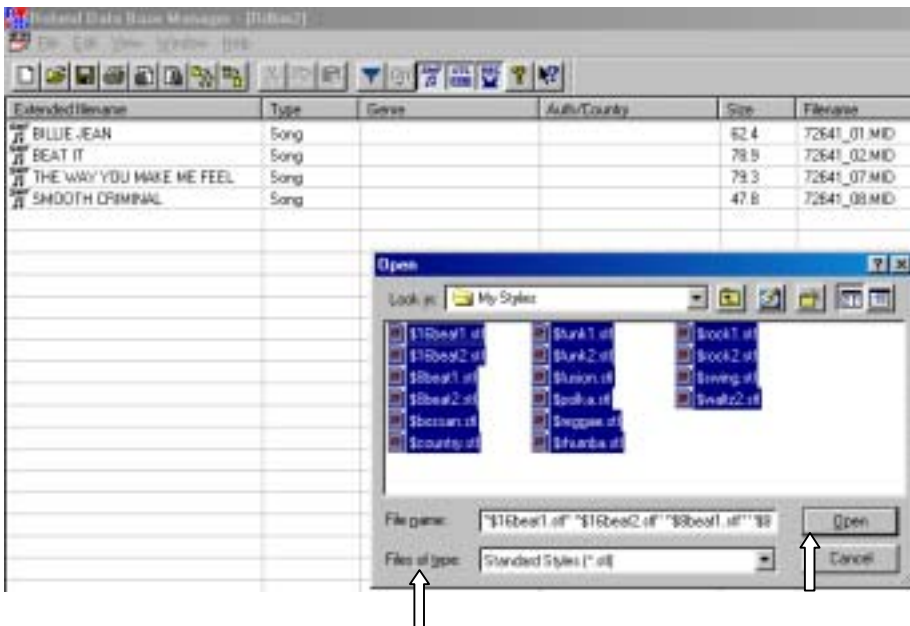


4. Now your Songs are imported and you can edit all database fields.




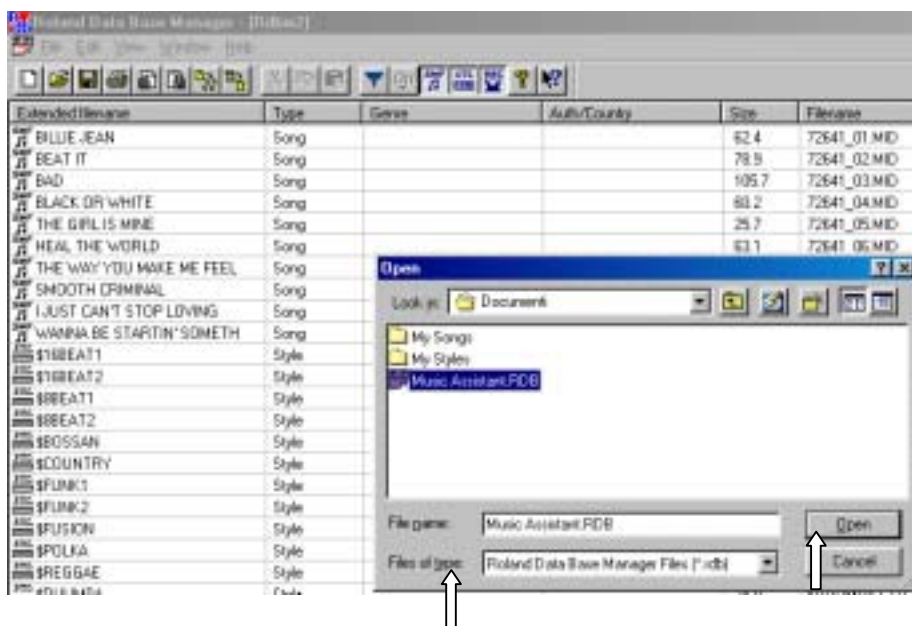
**Adding Styles :**

5. The operations are still the same as when adding songs. You only have to select as file type : Standard Styles \*.stl.

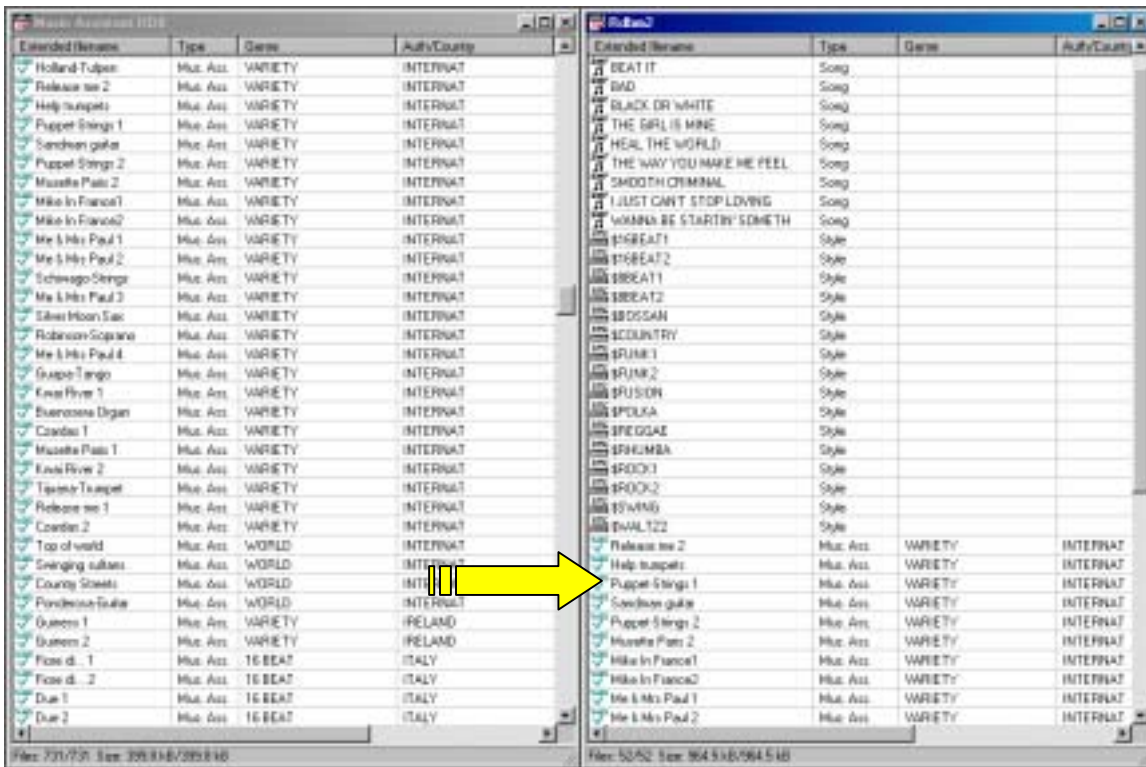


**Adding Music Assistant :**

6. To add Music Assistant files you may either import the databases from Zip or load a backup copy of it, which you had previously saved into your hard disk.
  - For the Import function see “Import Songs, Styles and Music Assistant” in this manual, page 3.
  - To load a previously saved Music Assistant database, select Open in the menu File (or click on this icon :  ). Choose the path in which the file is stored and press the Open button.




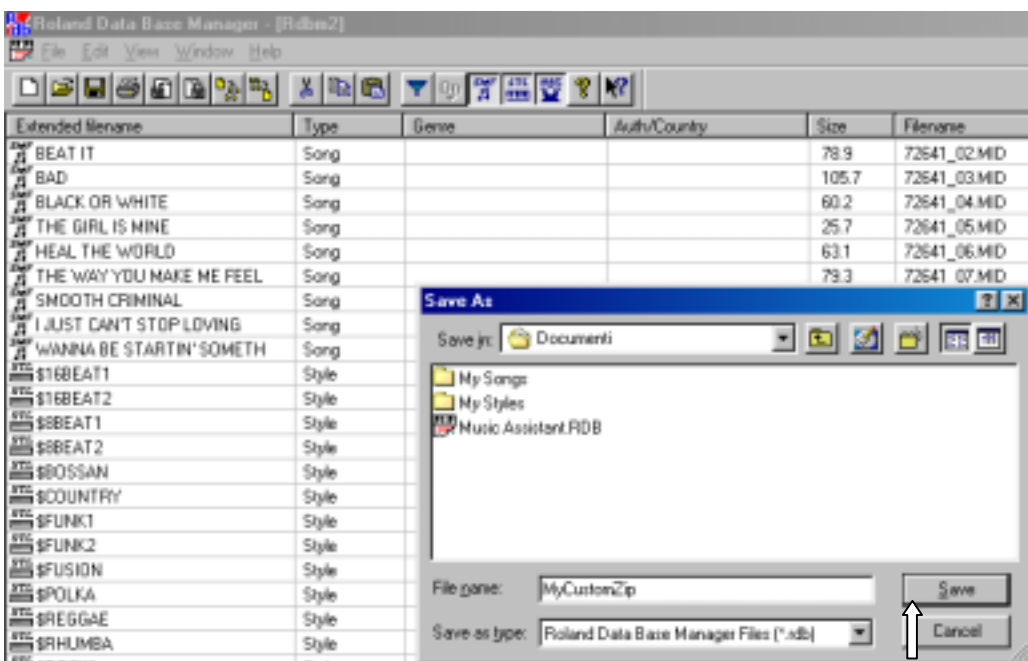
7. With the copy/cut or drag&drop functions, you can copy/move data from the original database to the new database you’re creating.



Now you are ready to Export (see “Export Songs, Styles and Music Assistant” in this manual, page 4.).

We suggest you to make also a backup copy of your Customized Zip.

Select your database and use Save function in the menu File (or click this icon : ). Choose the path in which to save the file, give the name to your new database and press the Save button.



**Trick**

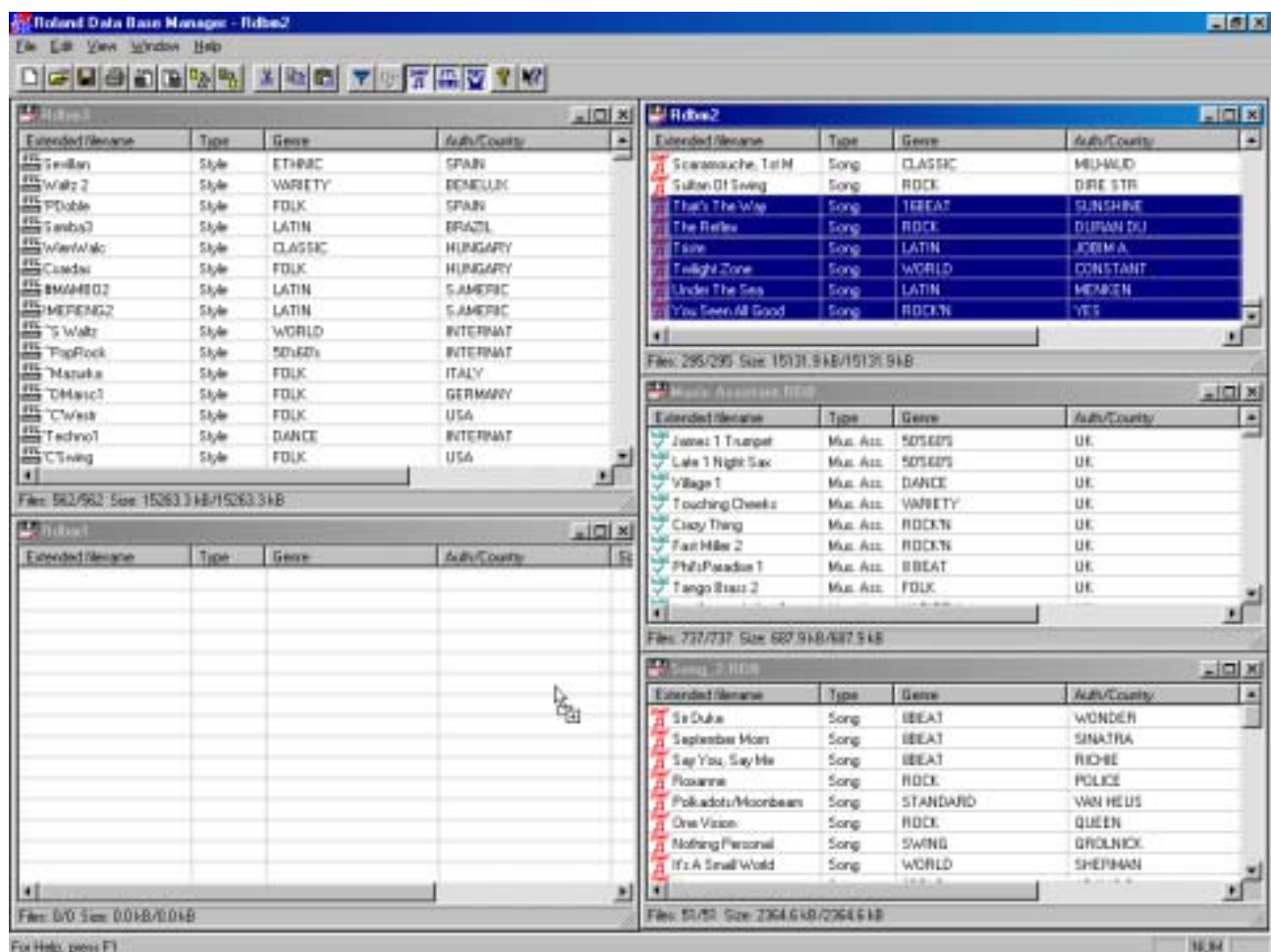
You can either import Songs, Styles and Music Assistant from more than one Zip or copy backup file from your disk, at the same time.

Let’s go creating a new Mixed database coming from 2 different Songs Database (one imported from Zip and one coming from a hard disk), 1 Style Database imported from Zip and 1 Music Assistant database coming from a hard disk.

Please, refer to the Import and Load description in this manual to import/load all the above mentioned databases.

Create a new empty database.

In the menu Window select Tile Vertically. The display will show the following screen-shot, so that you can drag&drop files from all the windows into the empty one.



At the end of your drag&drop work you’ll have created a new database ready to be exported into a Zip Disk and also saved into your hard disk.