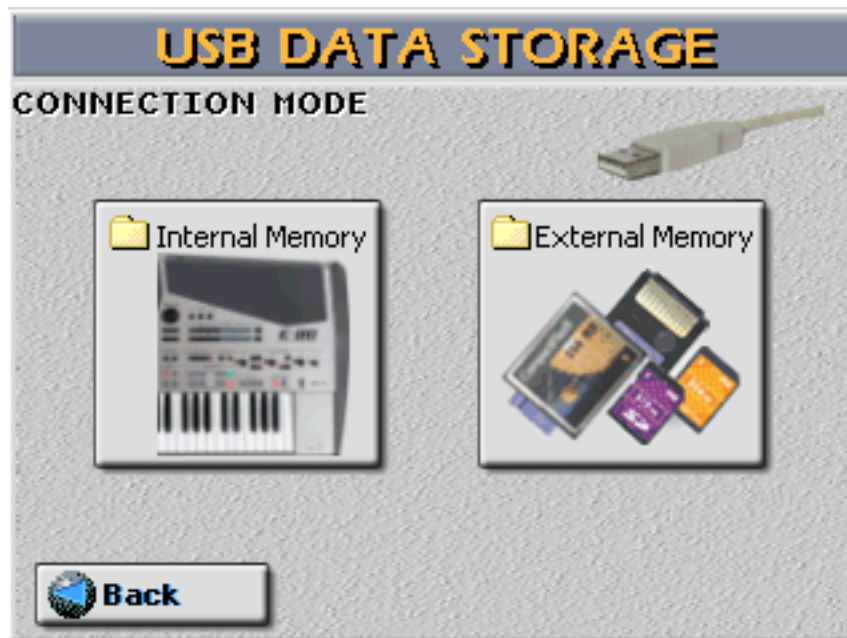


## READY TO PLAY STYLES : Instructions

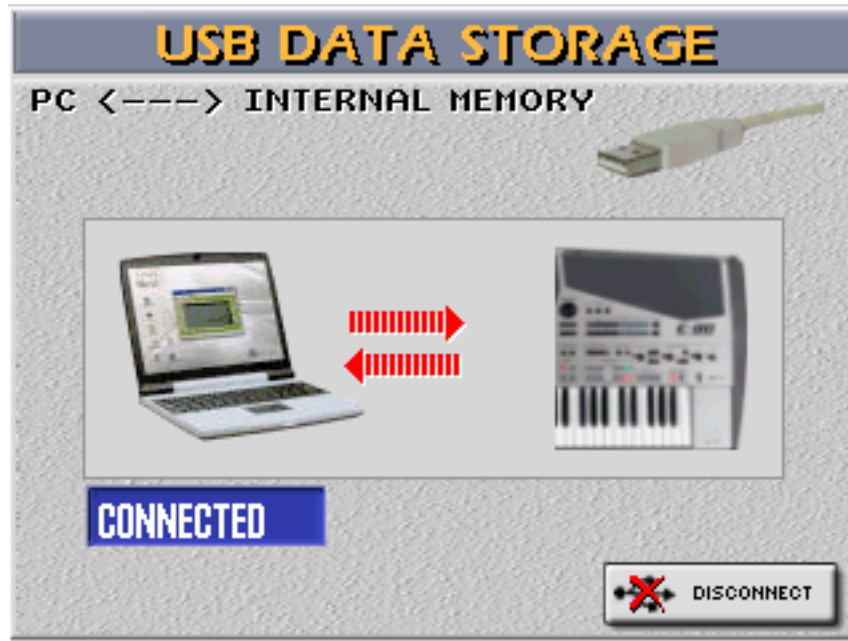
\*Press **Menu** on the keyboards panel.



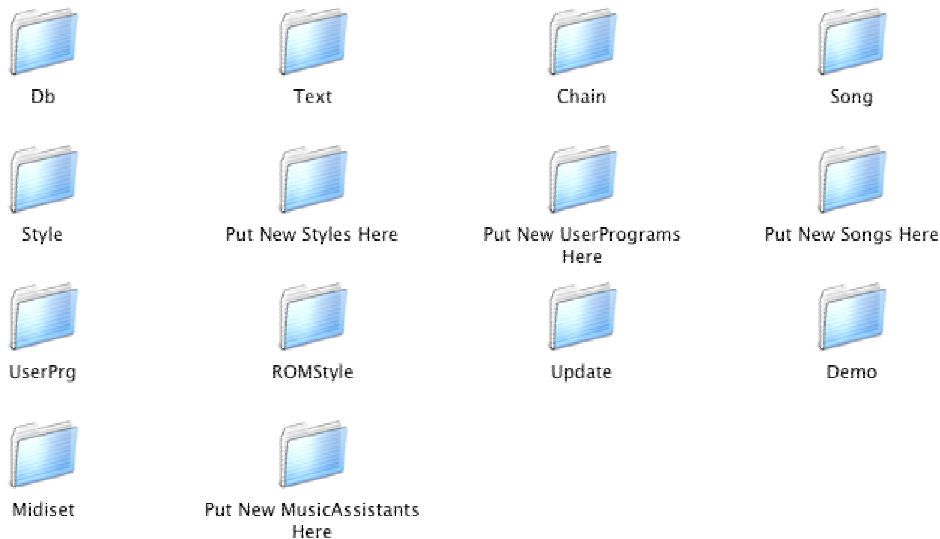
\*Press **USB Data Storage** on the touch screen.



\*Press **Internal Memory** on the touch screen.



\*After that you will see an additional drive being connected to your Computer.



\*Drag and Drop the 2 Folders "Put New Music Assistant Here" and "Put New Styles Here" onto the Keyboards Memory. The computer will ask you if you would like to replace the 2 Folders. Say YES. After that you can disconnect the Keyboards Memory from your computer by unmounting it.

If you would like to copy more than 1 RTP Style at a time into your keyboard it would be recommended to open the 2 Folders "Put New Music Assistant Here" and "Put New Styles Here" on your computer and copy the contents into the corresponding folders on your keyboard's memory.

Then you can press the Disconnect button on the touchscreen of your instrument.

\*Press **Exit** on the keyboard panel.

\*Press **User PRG** in the Finder section on the keyboards panel.

This will update the Database and copy the User Program into the Music Assistant list.



\*Now please press **Style** in the Finder section of the keyboard.  
This will update the Style database and copy the Style into the Style list.



\*After that you should find the Data you purchased in the Music Assistant list.  
Simply select the Song by touching it in the list.

\*Press the **Music Assistant** button on the panel of your keyboard.



\*Press **Finder** on the touchScreen and type the name of the RTP Style that you have purchased.  
(e.g. Blue Spain)

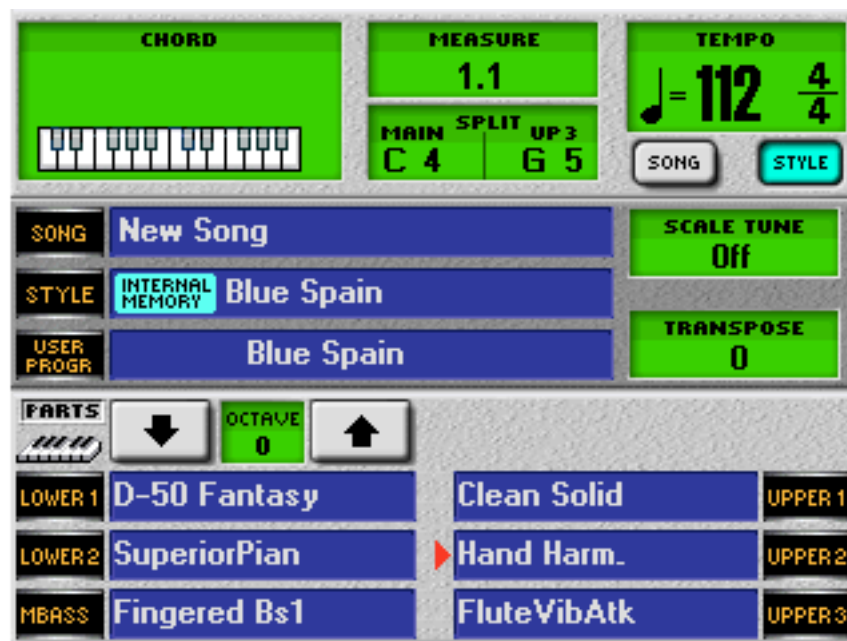


\*Press **Find** on the touch screen.



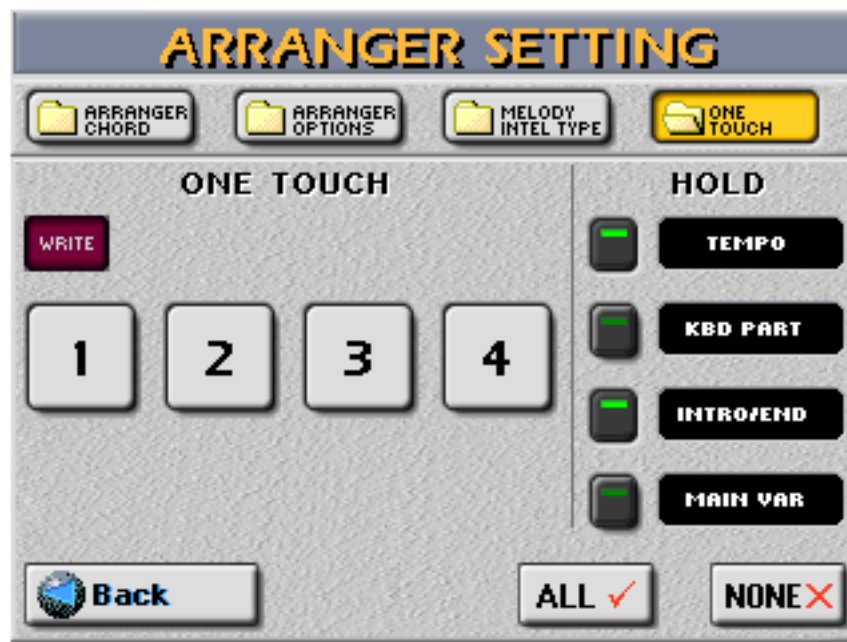
\*Select **Blue Spain** by touching the screen in the **Blue Spain** field.

\*Press Exit.



\*Start playing the song.

Try the different One Touch settings by using the 4 switches on the panel of the keyboard.



\*If you would like to recall the MA, just press Music Assistant again and select the song (in this example Blue Spain) by touching the screen again.



Thank you very much for participating and supporting the RTP Styles project.  
I hope you enjoy playing with my registrations!

Yours Sincerely  
Ralf Schink

Note: Even if the here shown screenshots come from the E-80, the above instructions are valid also for E-60, E-50, G-70 V3